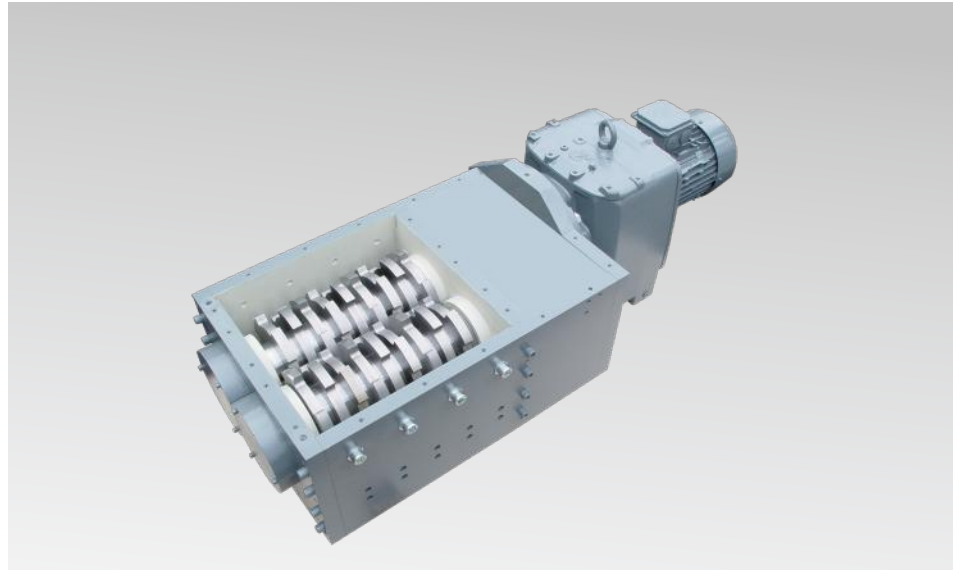




ERDWICH

... SHREDDING UNLIMITED ...

ERDWICH
TWO-SHAFT-SHREDDER
M350/2-330
M350/2-410



Advantages and special features
ERDWICH M350/2

■ **Simple maintenance:**

- | Fast access to cutter shafts
- | Individually fitted, replaceable cutters, spacing rings and sweepers

■ **Savings on operating costs:**

- | Long service life guaranteed by cutters from custom blade steel, fully hardened to permit repeated re-sharpening

■ **Highly-efficient shredding:**

- | High-precision cutter assembly with cutter shapes adjusted to the material
- | Configurable population of the cutter discs on a 6-sided shaft, ensuring optimum feed-in behaviour

■ **High throughput – low drive power consumption:**

- | Tightest-possible cutter spacing, ensuring energy-saving shredding without causing machine jams
- | Special sweeper systems with self-cleaning feature

■ **Robust and long-lived:**

- | Generously dimensioned, milled cutter shafts
- | Bulkhead seals to protect the shaft bearing from liquid and aggressive materials

■ **Cost-effective, safe operation:**

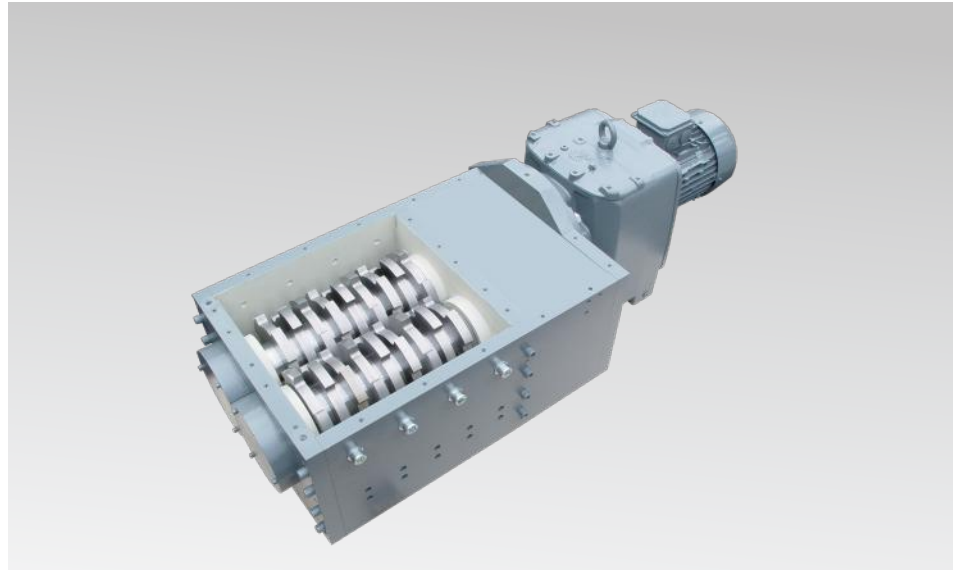
- | PLC unit featuring automated reverse and power down to protect the machine against damage from overloading or solid part



ERDWICH

... SHREDDING UNLIMITED ...

ERDWICH TWO-SHAFT-SHREDDER M350/2-330 M350/2-410



Technical Data

Type	Number of shafts	Driver Power in kW	Cutting unit size (LxW mm)	Weight (kg)	Diameter of punched sieve (mm)	Width of rotor knife (mm)
M350/2-330	2	2,2 - 4,0	326 x 390	475	20 - 30	19
M350/2-410	2	2,2 - 4,0	402 x 390	500	20 - 30	19

Dimensions			
	Dimension	M350/2-330	M350/2-410
Cutting unit length B	mm	326	402
Cutting unit width G	mm	390	390
Cutting unit height A	mm	298	298
Total length C*	mm	972	1048
Total length C1*	mm	1306	1382
Total width D*	mm	733	733
Total width D1*	mm	497	497
Total height E*	mm	400	400
Total height E1*	mm	405	405
Shaft Distance F	mm	150	150

Subject to technical changes.

*variable, depending on drive system

